

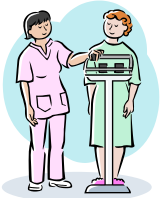
Patient information

Information for parents Children's Pre-Assessment



As your child is going to have an operation, you and your child will need to come into the hospital beforehand so that you can find out more about what will happen during your stay - this is called a children's pre-assessment clinic.

Coming into hospital can be a bit scary, so your pre-admission appointment should help to make you and your child feel less worried.



You'll be able to meet the staff who will chat with you to find out if you or your child have any anxieties about the planned treatment, learn more about what it'll be like in hospital and ask any questions you want.



Staff you can expect to meet are Leigh our Health Play Specialist and Petrina, a nurse who works on the Ward.

We also need to make sure that your child is fit for their operation. If your child needs any extra tests, we will arrange for them to be carried out.



If we think your child needs to see an anaesthetist, occupational therapist, physiotherapist or the operating surgeon, they will be available in clinic to assess your child during the pre-assessment appointment.

We will also discuss with you what medicines (if any) to have at home ready for when your child is discharged.



The children's pre-assessment clinic is held on Rainbow Ward which is at the rear of the main hospital building on the first floor.



If your child's appointment is on a Monday afternoon, you can expect to be at the hospital for up to an hour to an hour and a half. If needed your child may be seen by an anaesthetist, occupational therapist or physiotherapist. They will be available to assess your child during the appointment.

Tuesday appointments are all half an hour long.

If you cannot attend the given appointment, it is important you contact the Appointments Office to re-arrange the date and time.



Getting to the hospital



When you come to the hospital you can park in either car park A or there are some visitor/patient spaces in car park D at the rear of the hospital. The charges for using this car park can be found on the West Suffolk Hospital NHS Foundation Trust Website:

www.wsh.nhs.uk/PatientsVisitors/InformationforPatientsVisitors/CarParking

The hospital now has a number plate recognition system in place, so please remember your car registration number plate and enter it into a machine on the way back to your car.

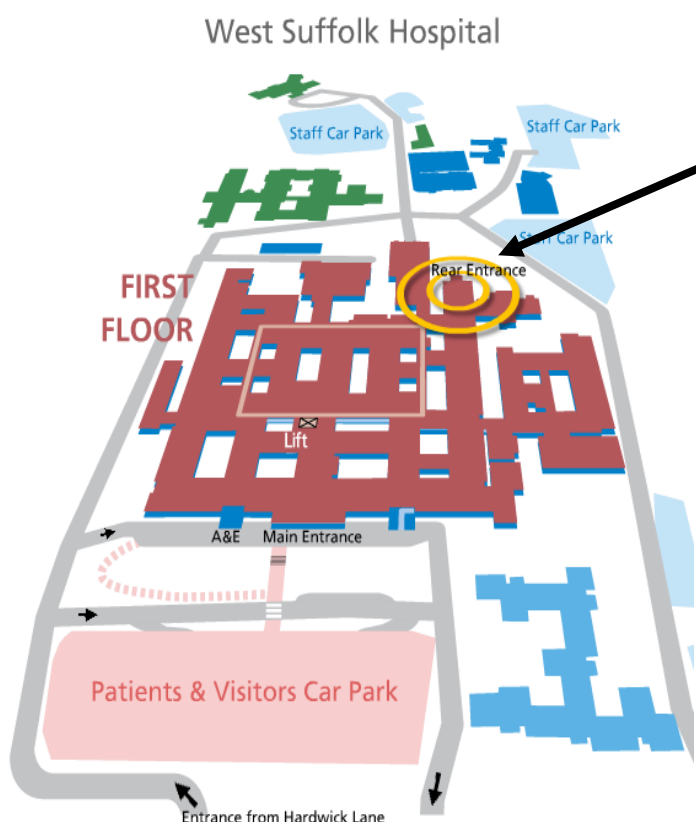
Disabled parking is allocated at the front, side and rear of the hospital.

Please note there are **no concessional parking discounts** available for parents/relatives of children who are inpatients at West Suffolk Hospital.

The M11, M22 and Breeze 1 bus services leave the bus station (St Andrews Street) in the town centre.

We look forward to meeting you and your child at the Children's Pre-assessment clinic.

For any further information please contact our Health Play Specialist Leigh on 01284 712730



Rainbow Ward Children's Pre-assessment Clinic

If you would like any information regarding access to the West Suffolk Hospital and its facilities please visit the website for AccessAble (the new name for DisabledGo) <https://www.accessable.co.uk>



© West Suffolk NHS Foundation Trust

Source: Paediatrics
Reference No: 6030-2
Issue date: 31/1/19
Review date: 31/1/22
Page No: 1

Putting you first