

## Patient information

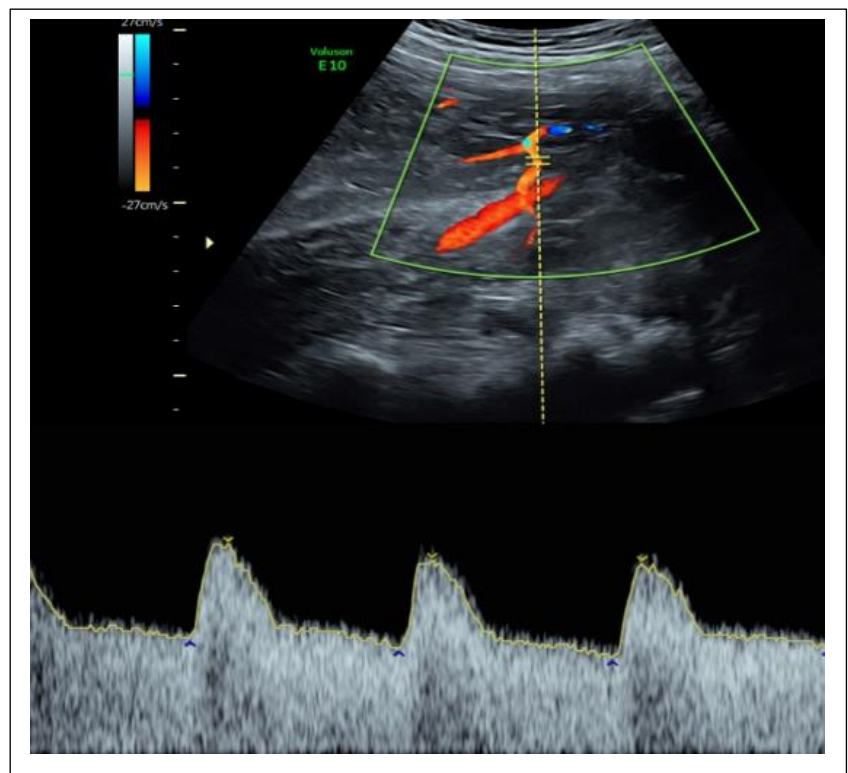
# Uterine artery doppler ultrasound measurement

## *Information for parents-to-be*

### What is a Uterine Artery Doppler measurement?

Uterine arteries are the vessels that carry blood to your uterus (womb). Ultrasound sound waves can be used to assess the uterine artery doppler measurement of blood flow from you to your uterus in pregnancy.

The doppler ultrasound measurement will check to see if the blood is flowing well (low resistance) or whether it is having to work harder to flow (raised resistance).



### What do the results mean?

A low resistance measurement means that a steady amount of blood is reaching your placenta, helping your baby to grow well.

Sometimes the measurement will show a raised resistance. This suggests that there is an increased chance of your baby not growing as well as expected, or of you developing pre-eclampsia.

## **When and why are we recommending this test?**

We are offering this screening test to women who are identified as higher risk for developing pre-eclampsia and growth problems in early pregnancy.

Uterine artery doppler tests are recommended by the Royal College of Obstetricians and Gynaecologists (RCOG) and NHS England: 'Saving Babies Lives 2' to help reduce the number of stillborn babies that occur as a result of growth restriction.

At West Suffolk Hospital we have chosen to offer this screening test alongside the fetal anomaly scan at around 20 weeks gestation to those who classify as higher risk.

## **What happens if my uterine artery doppler measurement shows raised resistance?**

It is important to understand that this does not mean that growth problems or pre-eclampsia will definitely occur, only that it is more likely. If your measurements show a raised resistance we will offer you additional scans and monitoring during your pregnancy. This means that if problems do arise they can be picked up as early as possible.

## **Further questions**

We hope you find this information helpful. If you have any further questions, please contact the antenatal clinic midwives on 01284 713286.

*If you would like any information regarding access to the West Suffolk Hospital and its facilities please visit the website for AccessAble (formerly DisabledGo)*

<https://www.accessable.co.uk>



© West Suffolk NHS Foundation Trust