

Patient information

Learning Disability Liaison Nursing Service

Information for carers

The role of the Learning Disability Liaison Nurse

- People with learning disabilities and/or autism can have high health needs that can at times go unrecognised and untreated.
- Evidence suggests that the experience of people with learning disabilities and/or autism, when accessing hospital, can be problematic and staff require support to ensure that individual patient needs are met effectively.
- The West Suffolk Hospital has a Learning Disability Liaison Nurse to help support people with learning disabilities and/or autism and their families/carers when accessing the hospital for any reason.
- This leaflet provides information on the role and how to contact the Learning Disability Liaison Nurse at the West Suffolk Hospital.

The Learning Disability Liaison Nurse

- Aims to play a crucial role in raising the profile and status of people with a learning disability and/or autism, who attend the West Suffolk Hospital.
- Actively promotes the needs and rights of people with a learning disability and/or autism, including specific support needs, issues of consent and right to treatment.
- Works directly with patients and their families / carers to assist them with

admission to hospital and to liaise with specialist teams and hospital staff to identify the support required e.g. clinic and pre-operative visits and co-ordinate in-patient stays and discharge planning.

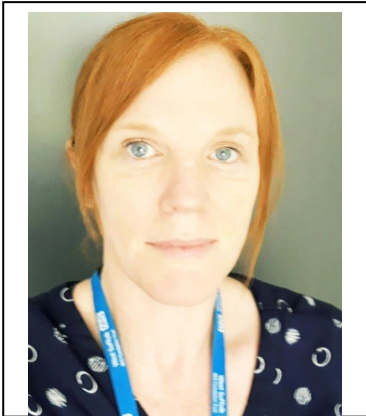
- Supports and enables hospital services to make 'reasonable adjustments' within their care delivery for people with learning disabilities and / or autism.
- Provides additional support for patients with learning disabilities and/or autism when they access the West Suffolk Hospital.
- Raises awareness of the specific health needs of people with a learning disabilities and/or autism and provides person-centred risk assessments that outline interventions and measures to reduce risks.
- Provides education and training for all hospital staff, to increase awareness of the needs of patients who have a learning disability and / or autism and how to adapt and plan care for them.
- Works closely with colleagues in primary care, to help patients who are coming in for planned appointments and procedures; preparing them for their hospital stay and helping to make their experience less stressful and as positive as possible.

The Learning Disability Liaison Nurse can help with the following:

- Pre-admission and discharge planning.
- Communication advice.
- Education and advice for people with learning disabilities / autism and their families / carers.
- Carer support and advice.
- Provide information on what to expect and what will happen during treatment or a procedure to aid understanding and enable informed consent.
- Facilitation of outpatient appointments.
- Provide accessible (easy read) information.
- Offer advice and support on reasonable adjustments that can be made to accommodate individual needs.

- Liaising with GPs, community health and social care teams and relevant organisations.
- Act as an advocate for patients and their families/carers when accessing the West Suffolk Hospital.

Your Learning Disability Liaison Nurse is Emer O'Mahony



If you would like any further information about the role, or if you have any questions about the person you are caring for who is accessing the West Suffolk Hospital for any reason please contact the Learning Disability Liaison Nurse on the number below.

The service is available from Monday to Friday from 9.00am to 5.00pm, excluding Bank Holidays. Outside of these hours please access the hospital as you normally would.

Useful contact details



Tel: **01284 713973**

If the Liaison Nurse is not available, please leave a message and they will call you back as soon as possible.



Email: emer.omahony@wsh.nhs.uk

Useful numbers



Learning Disability Helpline: 0808 808 11 11

The Learning Disability Helpline is an advice and information service for people with a learning disability, their families and carers. It also provides information and advice to anyone wanting

to know about learning disability issues and services.



If you would like any information regarding access to the West Suffolk Hospital and its facilities please visit the website for AccessAble (the new name for DisabledGo)
<https://www.accessable.co.uk/organisations/west-suffolk-nhs-foundation-trust>



© West Suffolk NHS Foundation Trust