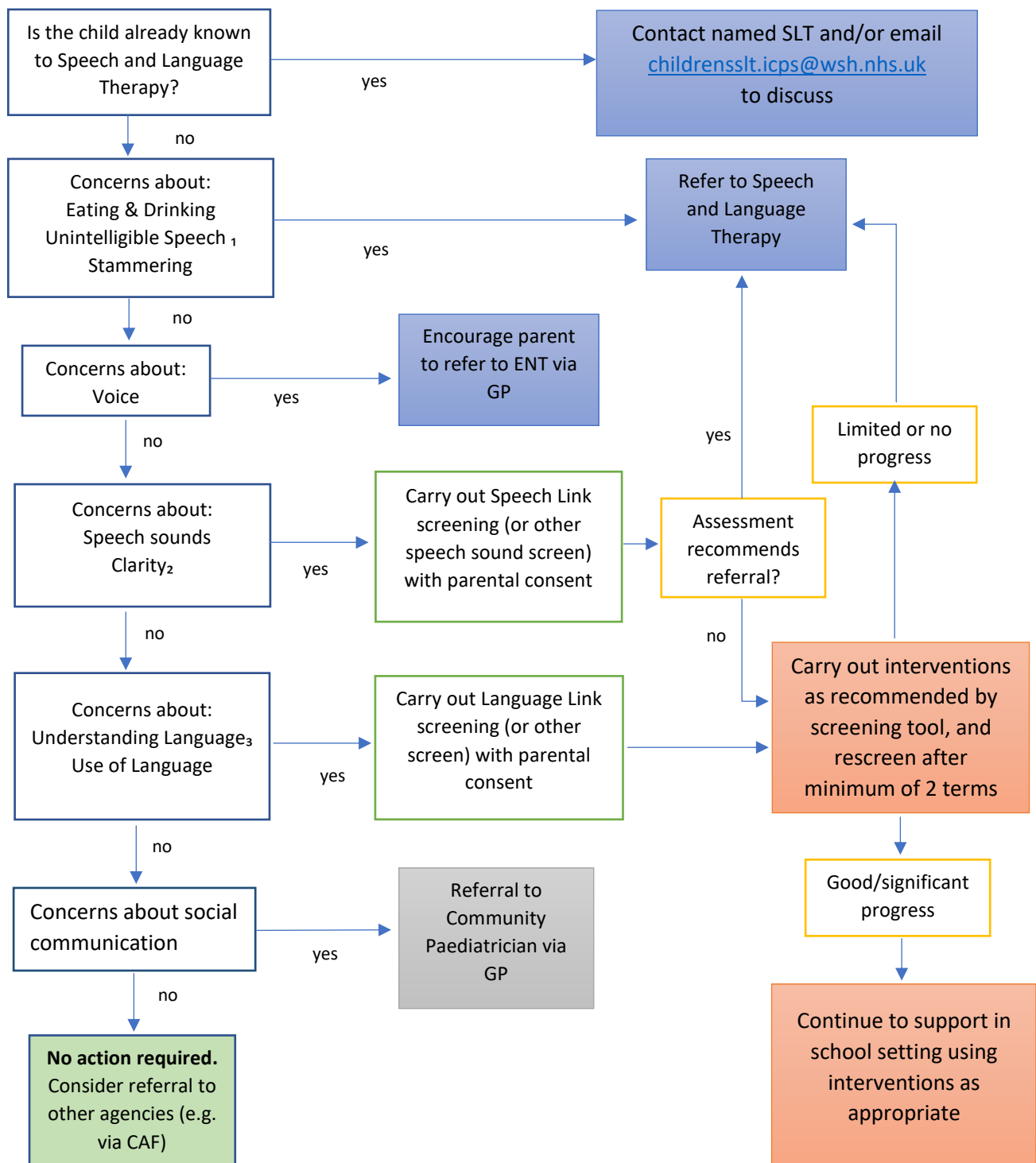


QUICK GUIDE FOR SCHOOLS – PAEDIATRIC SPEECH AND LANGUAGE DIFFICULTIES

The West Suffolk NHS Foundation Trust & Suffolk County Council referral flowchart for children with speech and language difficulties is shown below.

- Follow the Flow Chart below to identify the most appropriate process.
- Only refer to speech and language therapy when indicated
- Referrals which do not follow the action pathway will be returned
- Ensure you have parental consent for any activity undertaken



Using this flowchart will help ensure the family and child access assessment and support in a timely manner, without the need for re-referrals from one part of the system to another.

If making a direct referral to Speech and Language Therapy, please provide specific information about the nature of the difficulty. Where more than one language is spoken at home, complete the 'English as an Additional Language (EAL)' with the referral. All forms and referral information can be found on the website at <https://www.wsh.nhs.uk/Services-A-Z/Childrens-services/Childrens-community-services/Information-for-professionals.aspx>

Notes

- ₁'unintelligible speech' is defined as speech that few people, including parents/carers are able to understand
- ₂'speech clarity' is a measure of how easily others understand spoken output
- ₃'language' refers to knowledge of words, their meaning and how they link together